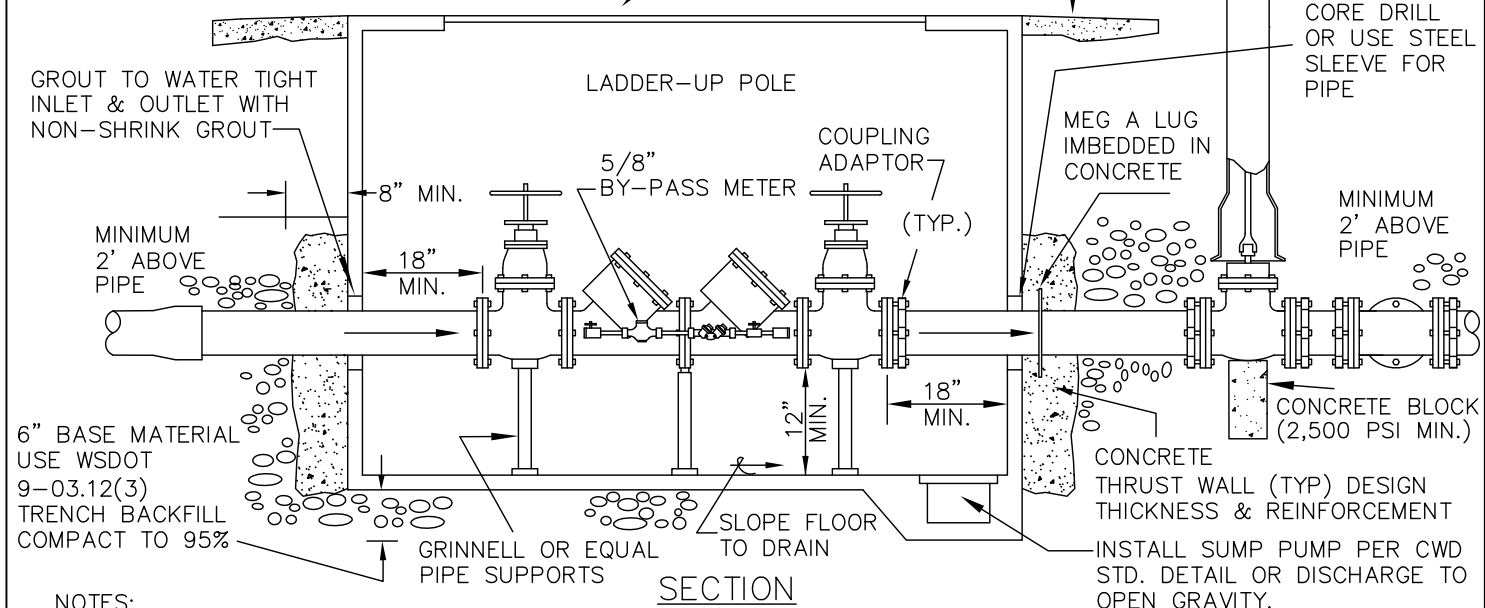


PLAN


HYDRAULICALLY ASSISTED ALUMINUM DOUBLE DOOR, SELF DRAINING W/ H-20 VEHICLE RATING & LOCKING HASP. (L.W. HATCH CO. OR APPROVED EQUAL)



SECTION

NOTES:

1. COVER SHALL NOT EXTEND MORE THAN 2" ABOVE GRADE WHEN VAULT IS NOT IN TRAFFIC AREA.
2. VAULT SHALL NOT BE INSTALLED IN TRAFFIC AREA UNLESS APPROVED BY THE DISTRICT ENGINEER. SLOPE PAVEMENT AWAY FROM COVER.
3. VAULT SHALL BE OF ADEQUATE HEIGHT TO PROVIDE MIN. 6" CLEARANCE TO O,S&Y VALVE WHEN VALVE IS FULLY OPEN.
4. INSTALL ALARM SYSTEM AS REQUIRED BY FIRE DISTRICT.
5. 5/8" BY-PASS METER SHALL BE PURCHASED FROM CWD.
6. VAULTS SHALL BE AS SPECIFIED IN APPROVED MATERIALS-APPENDIX C AND SHALL BE STRUCTURALLY DESIGNED FOR THE PROPOSED INSTALLATION.
7. CONTRACTOR SHALL BE RESPONSIBLE FOR SELECTING THE VAULT SIZE CONSISTENT WITH THE MINIMUM DIMENSIONS SHOWN IN THE DETAILS.

LAST REVISED	07/16		DCDA DOUBLE CHECK VALVE ASSEMBLY & VAULT W/FDC	23
APPROVED BY				
STEVE LEE	12/16			
ENGINEER				